

Puzzle box -Ladybug

Design concept

This puzzle box is inspired by *777*, the book by Japanese mystery author ISAKA Kotaro. The character Nanao, an assassin in the story, is named after the ladybug, a symbol of luck. However, despite his name, Nanao often finds himself in unlucky situations during his missions.

The exterior of the box is designed in all black, representing Nanao's identity as an assassin and the misfortune that seems to follow him. The interior, featuring a red and black color scheme, symbolizes the ladybug that his name refers to.

Every clue to open this puzzle box is related to "luck." Once solved, the hidden seven-star ladybug will be revealed inside.

While Nanao may seem unlucky at first glance, he is actually watched over by the goddess of luck. I hope that as you explore this puzzle, you'll come to see that, just like Nanao, events in life that seem unfortunate at first may not be as bad as they appear.

May the box reveal its luck to you !

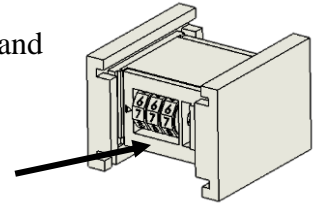


Puzzle box -Ladybug

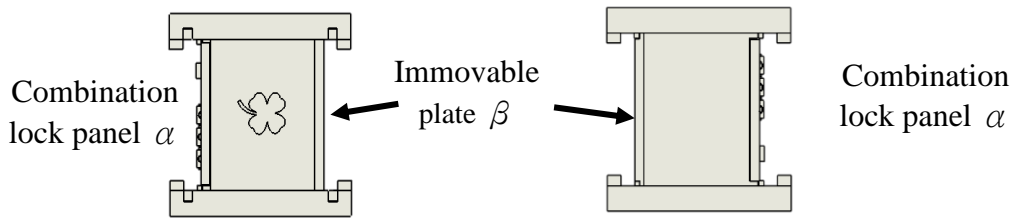
Solution

1. Find the first movable panel P . Push the panels in sequence a total of 7 times, and you will discover a combination lock panel α inside the box.

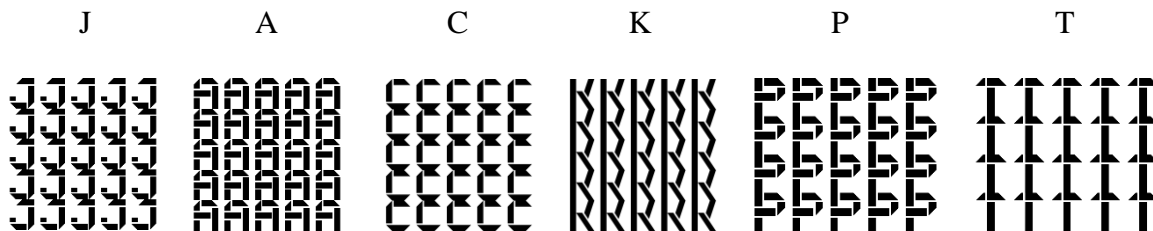
Combination lock panel α



2. Remove all the movable panels P on the box. Underneath, you will find a clover symbol, while on the opposite side of the combination lock, there is a plate β that cannot be moved yet.



3. Observe the hidden patterns on the P panels. Following the original order of movement, you'll find the letters J, A, C and K. The remaining two immovable panels hide the letters P and T.



The edges of each panel P reveal the letter O:

These are combined to form the single word "JACKPOT".

4. The three-digit number often associated with "JACKPOT" is 777, which is the answer to the combination lock.
5. After unlocking the combination, the panel α with the lock and plate β still cannot be moved.
6. When the clover symbol, representing luck, is facing upward, the panel α with the lock can be moved.
7. Once the panel α is moved, the previously immovable plate β on the opposite side can now be shifted.
8. Finally, remove the inner box and retrieve the lucky seven-star ladybug hidden inside.

